

Tokai Carbon – Isotropic Graphite Grade

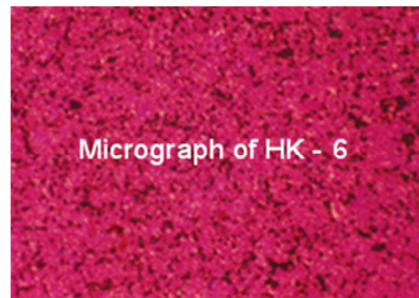
HK-6

1. Typical Properties

Specific Gravity	g/cm ³	1.86
Specific Resistance	μΩm	12.0
Flexural Strength	MPa	85.0
Hardness	Shore	68
Average Grain Size	μm	3

All properties measured room temperatures except for C.T.E.
 C.T.E. = Coefficient Thermal Expansion (R.T. to 1000°C)
 Flexural Strength determined using third point loading
 All properties are typical values and are not to be used for specification limits

2. Nominal Size 120 x 310 x 470mm



3. Application

A premier grade of ultra-fine graphite designed for ultra-high definition and excellent edge wear resistance. The special properties give good MRR rate/wear ratios and high quality surface finishes to 16 VDI due to its special machining properties. Uses include high quality mould making, aerospace industries and fine detail rib forms.