

Tokai Carbon – Isotropic Graphite Grade

HK-3

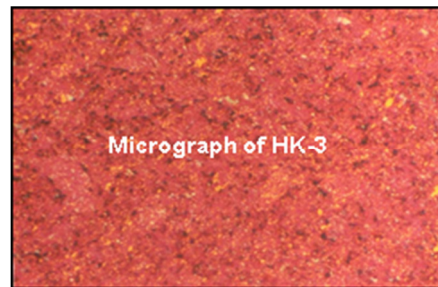
1. Typical Properties

Specific Gravity	g/cm ³	1.84
Specific Resistance	μΩm	15.5
Flexural Strength	MPa	88.0
Hardness	Shore	78
Average Grain Size	μm	2

All properties measured room temperatures except for C.T.E.
 C.T.E. = Coefficient Thermal Expansion (R.T. to 1000°C)
 Flexural Strength determined using third point loading
 All properties are typical values and are not to be used for specification limits

2. Standard Sizes

108 x 311 x 467mm



3. Application

Premier grade of ultra-fine graphite, to be best used where ultra-high definition and excellent edge wear resistance are critical. Good MRR rate/wear ratio giving high quality surface finishes down to 16 VDI with very low overall wear rates. Used in high quality mould making, aerospace industries and fine detailed rib forms.