

Tokai Carbon – Isotropic Graphite Grade

HK-20

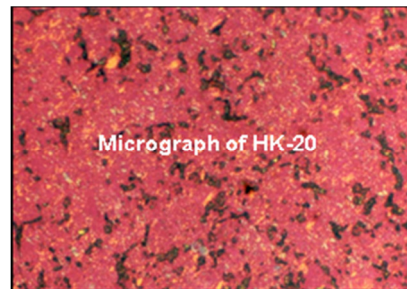
1. Typical Properties

Specific Gravity	g/cm ³	1.86
Specific Resistance	μΩm	12.0
Flexural Strength	MPa	66.0
Hardness	Shore	60
Average Grain Size	μm	6

All properties measured room temperatures except for C.T.E.
 C.T.E. = Coefficient Thermal Expansion (R.T. to 1000°C)
 Flexural Strength determined using third point loading
 All properties are typical values and are not to be used for specification limits

2. Standard Size

311 x 622 x 622mm



3. Application

High density, low resistance material for low wear and high speed EDM operation.

High quality finishing of small to medium die-casting tools. High definition mould and press tools to 24 VDI.