

## Tokai Carbon – Isotropic Graphite Grade

# HK-15

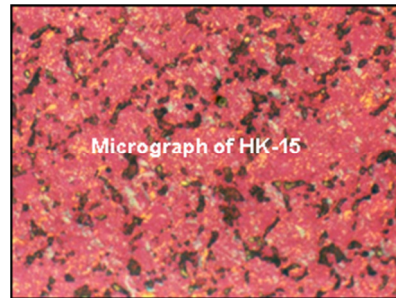
### 1. Typical Properties

Specific Gravity	g/cm <sup>3</sup>	1.83
Specific Resistance	μΩm	12.5
Flexural Strength	MPa	54.0
Hardness	Shore	62
Average Grain Size	μm	7

All properties measured room temperatures except for C.T.E.  
 C.T.E. = Coefficient Thermal Expansion (R.T. to 1000°C)  
 Flexural Strength determined using third point loading  
 All properties are typical values and are not to be used for specification limits

### 2. Standard Size

311 x 622 x 622mm  
 235 x 467 x 1245mm  
 290 x 590 x 1190mm



### 3. Application

Roughing of medium mould dies where accuracy is important.

Good quality finishing of forging dies and die-casting applications to 27 VDI.